

# Rotana Signs

*Company Overview 2025*



# About Rotana Signs

*Redefining the urban landscape & product offering*

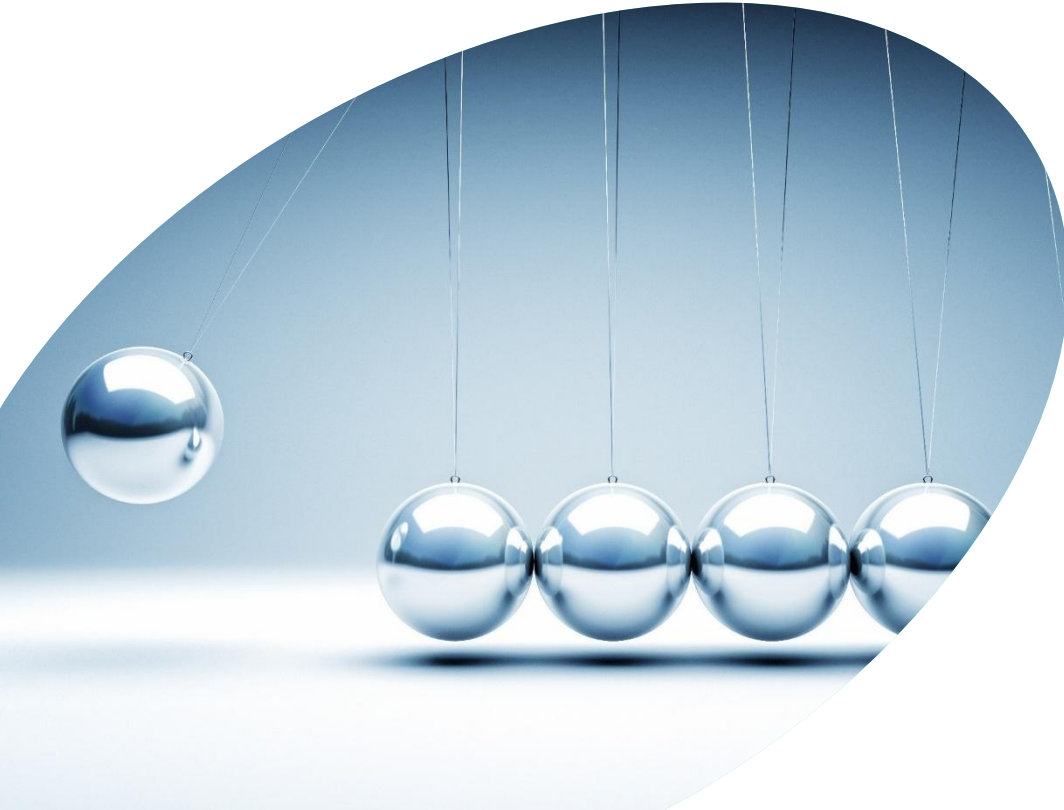
Rotana Signs stands as the most recent entrant in the Kingdom's out-of-home media landscape, introducing a pioneering array of innovative advertising platforms poised to redefine the urban visual environment.

This enterprise epitomizes the prevailing spirit of advancement within the Kingdom, stemming from the partnership of two esteemed media entities, Rotana Media Services and Saudi Signs Media.

In unison, we leverage decades of invaluable experience, insights and extensive industry understanding that will orchestrate our approach to address the diverse requirements of advertisers while providing highly sought-after solutions.



# Our Purpose



## The Vision Statement

Become the region's leading provider of disruptive media solutions, transforming outdoor experiences into extraordinary brand engagements.

## The Mission Statement

Innovating and transforming cities into vibrant stages for brands, our mission is to redefine media experiences, embody the kingdom's future while delivering global exposure that turns moments into market dominance.

# Our Market Offering

## Unparalleled Brand Experience

Providing local, regional, and international advertisers' exceptional platforms through which they can leave an indelible impression on their target audiences.

## Beacon of Excellence

Elevating Riyadh, Jeddah, Dammam and future cities into a world class reference of advertising excellence and accommodate our clients with best-in-class service.

## Large Format Network

Ensure advertisers leverage cutting-edge display technology across some of the most expansive and prominent facades in urban environments, ensuring unmatched visibility and impact.

## Icons of Engagement

Our formats deliver a commanding on-ground presence with their impactful and inspiring designs. Their sheer grandeur and dominance have naturally established them as iconic landmarks, driving consumer and brand engagement both offline and online, amplifying reach and visibility through organic sharing.





# Values That Guide Our Organization

## **Transformation**

Dedicated to reshaping the urban landscape and redefining the future of advertising by transforming cities into vibrant, interactive platforms for brands.

## **Innovation**

Pioneering new approaches in media representation by adopting the latest technologies and delivering creative advertising solutions.

## **Excellence:**

Committed to excellence by upholding the highest standards in service, consistently delivering superior quality and impactful results that drive brand success and meaningful audience engagement.

## **Transparency:**

Fostering trust with our partners and clients through open communication, clearly defined metrics, and demonstrable results.

## **Responsibility:**

Upholding ethical practices that drive sustainable growth for our clients, partners, and the communities we serve.

# Out-of-Home



# Rotana Signs Is On Track To Provide Unique Media Opportunities Across The Kingdom's Main Cities and Beyond



\*Makkah



Riyadh



Madinah



Jeddah



Dammam/Khobar



Arar



Hail



Al Qurayyat



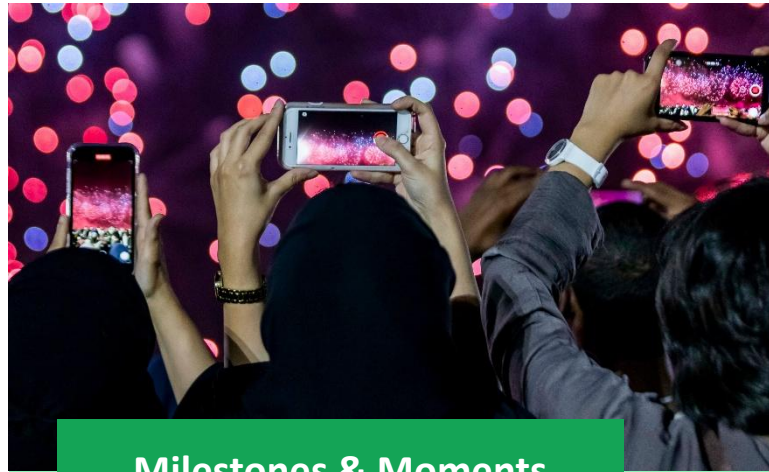
Al Qassim

# Create Memories For Your Brands Most Important Moments Across City Skylines



**Cultural Seasons**

Join the celebration and be part of the nation's most cherished moments, sparking meaningful conversations



**Milestones & Moments**

Showcase your company and brand's achievements in a visually stunning manner capturing attention and driving admiration



**Branding & Promotions**

Turn the city into a living canvas—launch and promote your brand and products on the Kingdom's largest digital facades and take command of the skyline



# Series Collection

Our **Series Collection** consists of a dynamic portfolio of high-impact advertising solutions strategically designed to maximize brand visibility, engagement, and impact across every consumer touchpoint.



## Legacy Series

Iconic outdoor formats delivering novelty presence with enduring impact

## Digital Series

Widely distributed outdoor formats delivering dynamic brand messaging in premium locations

## Classical Series

Timeless power of traditional outdoor formats offering clear visibility and long-term brand presence

## Transit Series

Opportune touchpoints for brands to accompany travelers and commuters along their journeys

## Entertainment Series

An immersive advertising presence that puts brands at the center of a live and engaging experience

## Retail Series

In-store dominance that connects brands with audiences throughout their shopping journey

# Riyadh

The Pulse of Regional Transformation and Progress

# Kingdom Tower

King Fahad Road, Al Olaya District, Riyadh

Series:	Legacy Series
Market:	Riyadh
Facades:	2
Installation:	North & South Façade

Orientation:	Portrait
Total Dimension:	82.65 meters x 253 meters
Total Façade Space:	15,462m² per façade
Location Map:	<a href="#">Click Here</a>

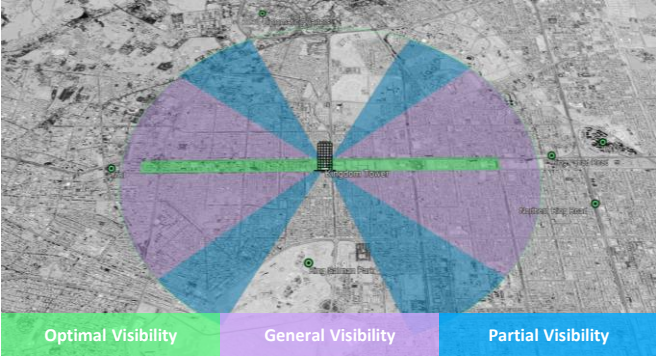


## Overview

Rising 300 meters above Riyadh, Kingdom Tower is a defining symbol of ambition and achievement in the city’s heart.

Nestled between King Fahad Road and Olaya Street in the Al Olaya District, it’s surrounded by leading business and residential hubs.

Visible from nearly every part of Riyadh, it stands as one of Saudi Arabia’s most recognizable landmarks.









# Burj Rafal

King Fahad Road, As Sahafah District, Riyadh

Series:	Legacy Series
Market:	Riyadh
Facades:	2
Installation:	North & South Façade

Orientation:	Portrait
Total Dimension:	62.716 meters x 135 meters
Total Façade Space:	8,466.6m <sup>2</sup> per façade
Location Map:	<a href="#">Click Here</a>

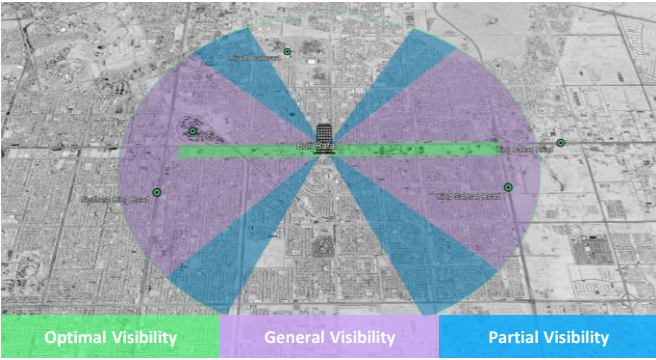


## Overview

Since opening in 2014, Burj Rafal has become one of Riyadh’s most iconic landmarks, rising 70 floors with 440 luxury residences and the JW Marriott Hotel.

Located in the As Sahafah district, it’s admired for its architecture and prominence in the city’s skyline.

Positioned about 2.5 kilometers north of the King Abdullah Financial District on King Fahd Road, it offers prime accessibility between the Northern Ring Road and King Salman Road.









# Esplande (Vox)

Prince Turki Road, King Saud University District, Riyadh

Series:	Legacy Series
Market:	Riyadh
Facades:	1
Installation:	South Façade

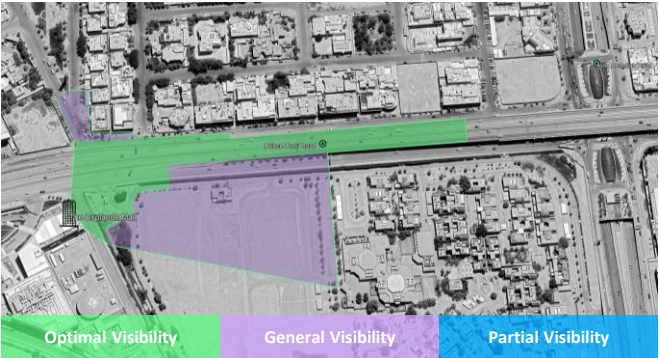
Orientation:	Landscape
Total Dimension:	24 meters x 10 meters
Total Façade Space:	240m² per facade
Location Map:	<a href="#">Click Here</a>



## Overview

Positioned along Prince Turki Road on The Esplanade Mall’s southern wall, this Digital Building Façade commands attention from motorists heading north toward Digital City, U-Walk, and King Saud University.

Visible even from the nearby overpass, it offers powerful exposure in one of Riyadh’s most vibrant commercial and lifestyle areas.



# Cenomi Nakheel Mall

Imam Saud Bin Abdulaziz Road, An Mughrizat District, Riyadh

Series:	Legacy Series
Market:	Riyadh
Facades:	1
Installation:	East Façade

Orientation:	Landscape
Total Dimension:	40 meters x 12 meters
Total Façade Space:	480 m²
Location Map:	<a href="#">Click Here</a>

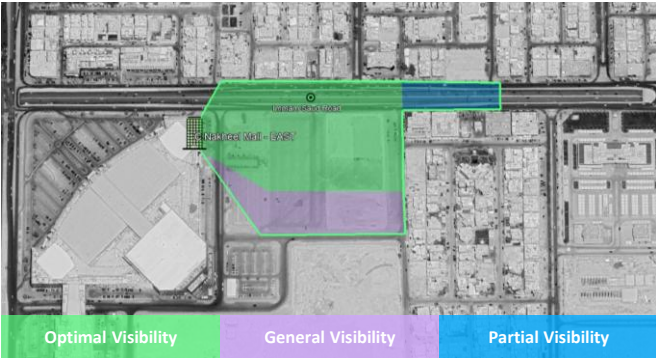


## Overview

Set in a prime, high-traffic hub, the new Digital Building Façade installation is the first of its size and prominence in such a strategic position against the vibrant backdrop of Cenomi Nakheel Mall.

### Eastern Façade

With direct exposure to motorists travelling westwards (from exit 9) along Imam Saud Bin Abdulaziz Road (towards Digital City).





# Cenomi Nakheel Mall

Uthman Ibn Affan Road, An Mughrizat District, Riyadh

Series:	Legacy Series
Market:	Riyadh
Facades:	1
Installation:	South Façade

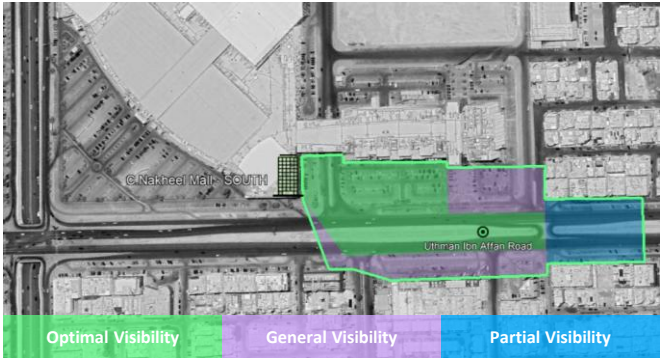
Orientation:	Landscape
Total Dimension:	40 meters x 12 meters
Total Façade Space:	480 m²
Location Map:	<a href="#">Click Here</a>



## Overview

Installed on the opposite side of the Cenomi Nakheel Mall – East facade, this new Digital Building Façade is fixed on the southern wall of the mall.

Due to its positioning, this façade supports advertiser campaigns driving northwards along **Uthman Bin Affan Road** capturing all traffic originating from Al Mughrizat and An Nuzhah districts.



# Zain Building

Makkah Road, King Abdullah District, Riyadh (opp. Ministry of National Guard)

Series:	Legacy Series
Market:	Riyadh
Facades:	1
Installation:	East Façade

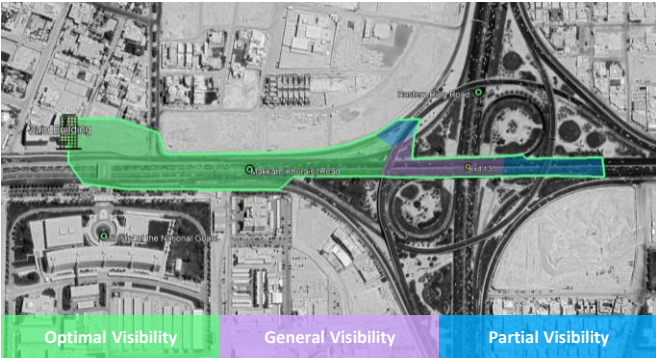
Orientation:	Landscape
Total Dimension:	42 meters x 11 meters (W x H)
Total Façade Space:	462 m²
Location Map:	<a href="#">Click Here</a>



## Overview

Positioned on the high-traffic Khurais Road, just after Exit 13 and before the King Abdulaziz Public Library, the Zain Digital Building Façade offers prime visibility along one of Riyadh’s most vital east-west corridors.

Facing westbound traffic, this expansive screen captures the daily attention of thousands of commuters, making it a commanding landmark for advertisers seeking consistent, high-frequency exposure in a zone that is a gateway into the heart of Riyadh City.





# Solitaire

King Abdulaziz Road, As Sahafah District, Riyadh

Series:	Legacy Series
Market:	Riyadh
Facades:	1   L-Shape
Installation:	South & East Façade

Orientation:	Landscape
Total Dimension:	77 meters x 18 meters (W x H)
Total Façade Space:	1,386 m²
Location Map:	<a href="#">Click Here</a>



## Overview

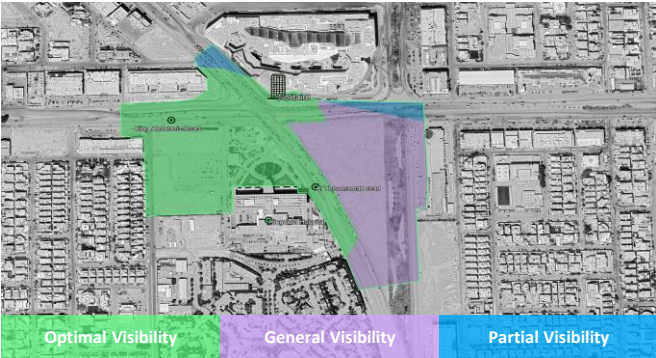
Installed on the south-east side of Riyadh’s newest high luxury mall, this Digital Building Façade comprised of 2 sides will act as a **singular touchpoint**.

### Eastern Façade

With direct exposure to motorists on **Al Thoumamah Road** heading west and those on King Abdulaziz Road heading south.

### Southern Façade

With direct exposure to motorists on **King Abdulaziz Road** heading north and those on Al Thoumamah Road heading east.





# Metro Carriage Screens

Carriage Cars, Riyadh Metro

Series:	Transit Series
Market:	Riyadh
Trains / Screens:	183 Trains / 2,688 Screens
Installation:	Carriage Interior

Orientation:	Landscape
Dimension:	18" and 19"
Screens per Carriage:	6
Location Map:	N/A

## Overview

Engage thousands of daily commuters through high-impact digital advertising inside Riyadh Metro Carriages.

Each carriage features up to six strategically placed screens, ensuring full visibility for seated and standing passengers.

With long dwell times in a distraction-free environment, brands benefit from high exposure, strong recall, and repeated impressions.

This **exclusive platform** offers direct access to a diverse, captive audience within one of the region’s fastest-growing transport networks.









# Stadium Dominance

Kingdom Arena | Souwaid Ibn Harithah, Hittin, Riyadh

Series:	Entertainment Series
Market:	Riyadh
Screens / Sides:	4 Screens / 2 Sides
Installation:	Goal Lines

Orientation:	Arch
Dimension:	34 meters x 27 meters
Screens per Carriage:	1,512m <sup>2</sup>
Location Map:	<a href="#">Click Here</a>

## Overview

Experience the future of stadium advertising with Rotana Signs’ groundbreaking digital façade inside the Kingdom’s largest indoor football stadium, home to Al Hilal FC.

Featuring four high-definition LED facades positioned at each corner and converging toward the central scoreboard along the goal lines, the 1,512m<sup>2</sup> display offers unmatched visibility and immersion.

For over 90 minutes, brands command the arena’s visual space, achieving maximum exposure in one of the region’s most dynamic sporting environments.









# Match Schedule 25/26

\*Match schedule is subject to change without prior notice



Match Type	Kingdom Arena Home Game	Football Match			Date
KEY MATCHES	Game #4	Al Hilal	x	Al Shabab	Thu, 30-Oct-2025
	Game #8	Al Hilal	x	Al Nasr	Mon, 12-Jan-2026
	Game #10	Al Hilal	x	Al Ahli	Sun, 01-Feb-2026
	Game #12	Al Hilal	x	Al Ittihad	Fri, 19-Feb-2026
Match Type	Kingdom Arena Home Game	Football Match			Date
OTHER MATCHES	Game #1	Al Hilal	x	Al Riyadh	Fri, 29-Aug-2025
	Game #2	Al Hilal	x	Al Qadisiya	Sat, 13-Sept-2025
	Game #3	Al Hilal	x	Al Okhdud	Fri, 26-Sept-2025
	Game #5	Al Hilal	x	Al Fateh	Fri, 21-Nov-2025
	Game #6	Al Hilal	x	Al Khaleej	Thu, 25-Dec-2025
	Game #7	Al Hilal	x	Al Hazem	Fri, 08-Jan-2026
	Game #9	Al Hilal	x	Al Fayhaa	Tue, 20-Jan-2026
	Game #11	Al Hilal	x	Al Ittifaq	Sun, 01-Feb-2026
	Game #13	Al Hilal	x	Al Najmah	Wed, 04-Mar-2026
	Game #14	Al Hilal	x	Al Taawun	Fri, 03-Apr-2026
	Game #15	Al Hilal	x	Al Kholood	Thu, 23-Apr-2026
	Game #16	Al Hilal	x	Damac	Fri, 28-Apr-2026
	Game #17	Al Hilal	x	Neom	Wed, 03-May-2026



# Jeddah

Where Tradition Inspires Modern Expression Along the Western Coast



# Digital Steel Bridge

City Wide Distribution, Jeddah

Series:	Digital Series
Market:	Jeddah
Location / Faces:	12 Locations / 24 Faces
Installation:	City Wide

Orientation:	Landscape
Av. Dimension:	≈77 meters x 9 meters (W x H)
Av. Space:	≈500m² per facade
Location Map:	<a href="#">Click Here</a>



## Overview

A true innovation in Jeddah’s OOH landscape, the Digital Steel Bridges span major highways as iconic, full-width LED structures.

With over 500m² of premium display space, they deliver unmatched visibility, brand impact, and dual-sided exposure while serving as safe pedestrian crossings.

Each bridge supports static, animated, and day-part messaging on high-profile routes.









# Digital Bridge

City Wide Distribution, Jeddah

Series:	Digital Series
Market:	Jeddah
Faces:	18
Installation:	Tunnels and Overpasses

Orientation:	Landscape
Total Dimension:	14 meters x 3 meters
Total Façade Space:	42 m²
Location Map:	<a href="#">Click Here</a>



## Overview

A network of 20 new **Digital Bridges** are being installed across the vibrant west coast city of Jeddah, extending high-impact visibility along key east–west and north–south corridors.

Designed as the dynamic counterpart to the Digital Steel Bridges, this new series captures the attention of thousands of residents and commuters daily, reinforcing brand presence across connected neighborhoods and communities.

Placement will be included across:

- East/West Roads x Madina Road (Overpass / Tunnels)
- King Abdullah Road
- Al Andalus Road
- Sari Road
- King Fahed Street (Sitteen)





# Stars Avenue

Stars Avenue, King Abdulaziz Road, Al Zahra District, Jeddah

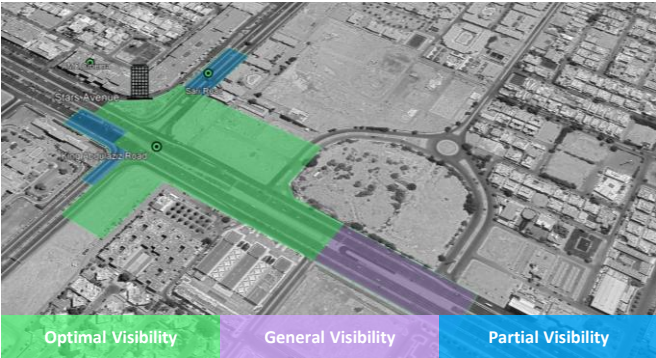
Series:	Legacy Series
Market:	Jeddah
Facades:	1
Installation:	South Façade

Orientation:	Landscape
Total Dimension:	77.6 meters x 12.6 meters
Total Façade Space:	977.8 m²
Location Map:	<a href="#">Click Here</a>

## Overview

The Stars Avenue Digital Building Façade is a high-definition display along Jeddah’s busy [King Abdulaziz Road](#).

A well-known city landmark crossing Sari Road, its curved, low-level design maximizes visibility and captures attention from motorists in every direction





# Tahlia Mall

Tahlia Mall, Tahlia Road, Ar Rawdah District, Jeddah

Series:	Legacy Series
Market:	Jeddah
Facades:	1   L-Shape
Installation:	South & East Façades

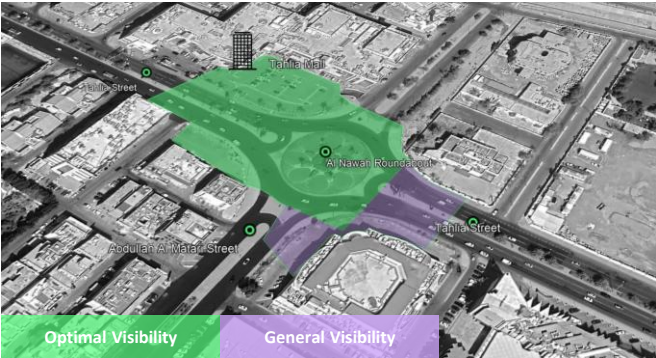
Orientation:	Landscape
Total Dimension:	23.2 meters x 16.2 meters
Total Façade Space:	375.84 m²
Location Map:	<a href="#">Click Here</a>



## Overview

Installed in 2025, the Tahlia Mall Digital Building Façade spans two sides of the mall along Jeddah’s prime Tahlia Road.

Positioned at **eye level and 3D-capable**, it offers clear visibility to westbound motorists near Al Nawah Roundabout, ensuring extended exposure as traffic slows at this busy junction.





# Sari Road

Sari Road, As Salamah District, Jeddah

Series:	Legacy Series
Market:	Jeddah
Facades:	1
Installation:	East Facade

Orientation:	Portrait
Total Dimension:	9.76 meters x 15.36 meters
Total Façade Space:	149.9 m <sup>2</sup>
Location Map:	<a href="#">Click Here</a>



## Overview

Located at the junction of Sari Road and Al Yamamah Street in central Jeddah, this Digital Building Façade offers prime visibility amid heavy traffic.

As one of the city’s **key east–west routes**, Sari Road ensures repeated exposure, making it a major advertising landmark for daily commuters.





# Madina Road

Madina Road, Al Naeem District, Jeddah

Series:	Legacy Series
Market:	Jeddah
Facades:	1
Installation:	East Facade

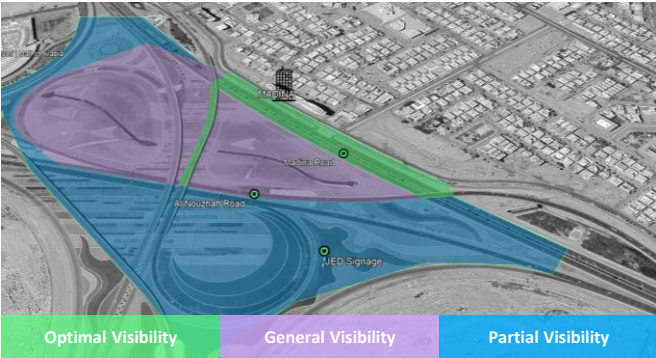
Orientation:	Portrait
Total Dimension:	35.1 meters x 25.6 meters
Total Façade Space:	898.5 m²
Location Map:	<a href="#">Click Here</a>



## Overview

Located in Al Naeem district along Madina Road, this Digital Building Facade captures attention from both directions and eastbound traffic on Al Nouzhah Road.

Strategically placed near the city’s northern junction, it greets arriving travelers and remains a familiar landmark for daily commuters across Jeddah.



# Haramain Road

Haramain Road (RING ROAD), Al Naeem District, Jeddah

Series:	Legacy Series
Market:	Jeddah
Facades:	1
Installation:	South Facade

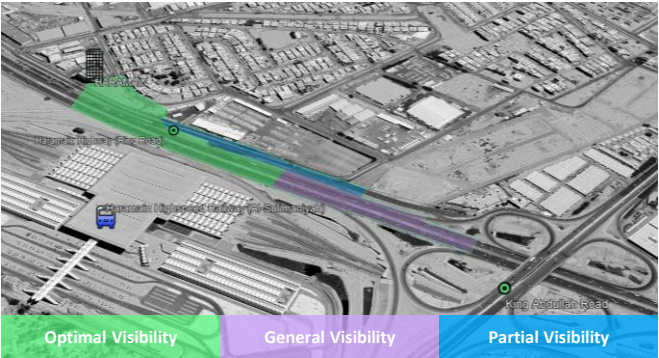
Orientation:	Portrait
Total Dimension:	20.8 meters x 33.1 meters
Total Façade Space:	688.4 m <sup>2</sup>
Location Map:	<a href="#">Click Here</a>



## Overview

Located along the Ring Road (Haramain Highway) on Jeddah’s eastern edge, this Digital Building Façade serves a key north/south corridor linking nearby districts and Makkah.

With heavy daily traffic across four lanes and service roads, it offers strong visibility, further enhanced by its **proximity to Al-Sulimaniyah Train Station**.





# Prestige Billboard

City Wide Distribution, Jeddah

Series:	Digital Series
Market:	Jeddah
Faces:	10 Faces
Installation:	Roadside

Orientation:	Landscape / Portrait
Av. Dimension:	7m x 11m / 6m x 9m
Av. Space:	77 m <sup>2</sup> / 54 m <sup>2</sup>
Location Map:	<a href="#">Click Here</a>

## Overview

As part of the dynamic transformation of the out-of-home advertising landscape in Saudi Arabia, Jeddah has welcomed an exciting new addition that redefines visibility for advertisers.

With strategically chosen locations in high profile areas, the **Prestige Billboard** installations are designed to keep the community informed while delivering exceptional exposure for local, regional, and international brands.

Orientated in a portrait nature, the Prestige Billboards are positioned in well-established neighborhoods and key roads such as:

- Tahlia Street
- Prince Sultan
- King Abdulaziz Road



\*Panel inventory is rolling out in phases. Please consult your sales contact

# Maxi Billboard

City Wide Distribution, Jeddah

Series:	Digital Series
Market:	Jeddah
Faces:	45 Faces
Installation:	Roadside

Orientation:	Landscape
Av. Dimension:	10m x 5m / 14.7m x 4.3m
Av. Space:	50 m²
Location Map:	<a href="#">Click Here</a>



## Overview

Maxi Billboards redefine high-impact digital out-of-home across Jeddah’s established and fast-growing districts, expanding brand visibility into previously untapped areas of the city.

These structures deliver powerful, dominant exposure across Jeddah’s key road networks, including King Abdulaziz Road, King Fahd Road (Sitteen), Madinah Road, Prince Mohammad Road (Tahlia), Ring Road (Haramain Road) and more.

Maxi Billboards offer city-wide coverage, high frequency, and consistent visibility, creating exceptional exposure opportunities across Jeddah’s most vibrant urban zones.



\*Panel inventory is rolling out in phases. Please consult your sales contact



# Static Maxi Billboard

City Wide Distribution, Jeddah

Series:	Classical Series
Market:	Jeddah
Location / Faces:	11 Locations / 21 Faces
Installation:	Roadside

Orientation:	Landscape
Av. Dimension:	≈14.7 meters x 4.3 meters
Av. Space:	≈63m <sup>2</sup> per facade
Location Map:	<a href="#">Click Here</a>

## Overview

Static Maxi Billboards in Jeddah are strategically positioned along Medina Road and the Jeddah–Makkah Highway, key routes connecting daily commuters, pilgrims, and industrial zones.

Prominent and unobstructed, they deliver strong visibility and impact, making them ideal for large-scale campaigns with clear calls to action.

Located near major commercial and industrial areas, these Static offer clear long-distance communication, high exposure, and flexibility for special advertising executions



\*Quantities and locations subject to change without prior notice

# Static Steel Bridge

Al Makarunah Street, An Nuzhah Distrct, Jeddah

Series:	Classical Series
Market:	Jeddah
Location / Faces:	1 Location / 2 Faces
Installation:	Pedestrian Bridge

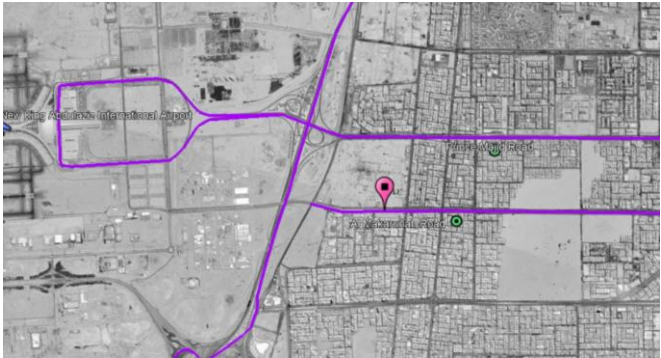
Orientation:	Landscape
Av. Dimension:	≈66 meters x 8.7 meters
Av. Space:	≈410m² per facade
Location Map:	<a href="#">Click Here</a>

## Overview

Located in Jeddah’s northern An Nuzhah district along Al Makarunah Street, the Static Steel Bridge offers brands exclusive 24/7 visibility and complete share of voice.

Installed on a prominent route, it provides clear dual-sided exposure to both motorists and pedestrians while serving as a safe crossing.

Designed for impactful static displays, it stands as a powerful landmark for sustained brand presence in a prime city location.





# Hajj Terminal

King Abdulaziz International Airport, Jeddah

Series:	Transit Series	Orientation:	Landscape & Portrait
Market:	Jeddah	Av. Dimension:	Various
Faces:	744 Faces	Av. Space:	Various
Installation:	Interior & Exterior	Location Map:	<a href="#">Click Here</a>

7 Million PAX '24

30,000+ Flights

40+ Countries of Origin

80+ Airlines



Duty Free



Luggage Area Wall Screens



Luggage Area Belt Screens



Passport Control Screens



Exit Screens



Plaza Screens



Jet Bridges



Stickers



Square Pillars



Luggage Belt Wall Screens

\*Quantities and locations subject to change without prior notice

<b>Series:</b>	<b>Transit Series</b>	<b>Orientation:</b>	Landscape & Portrait
<b>Market:</b>	Jeddah	<b>Av. Dimension:</b>	Various
<b>Faces:</b>	744 Faces	<b>Av. Space:</b>	Various
<b>Installation:</b>	Interior & Exterior	<b>Location Map:</b>	<a href="#">Click Here</a>

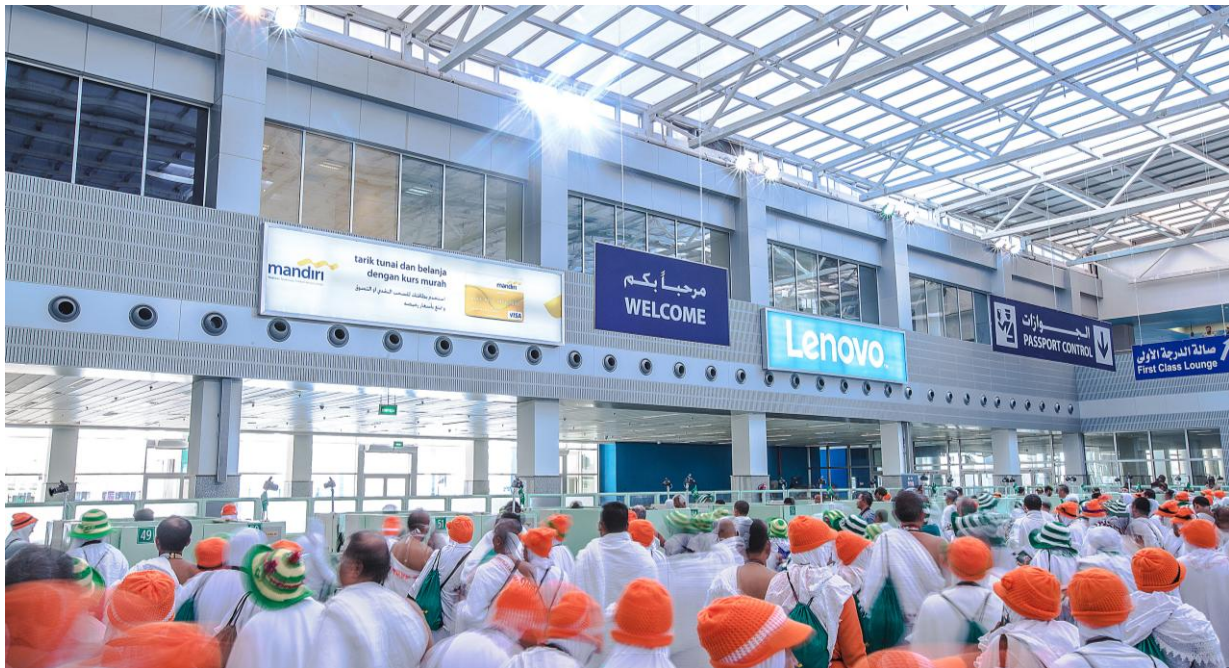
## 80+ Airlines



## Totems









# Haramain Highspeed Railway

Series:	Transit Series	Faces:	1,770 Faces
Stations Covered By Train:	<ul style="list-style-type: none"><li>Makkah</li><li>Jeddah</li><li>King Abdulaziz Int’l Airport</li><li>KAEC</li><li>Madinah</li></ul>	Installation:	Interior & Exterior
		Orientation:	Landscape & Portrait
		Location Map:	<a href="#">Click Here</a>

9.1 Million PAX ‘24

5 Stations

35 Operating Trains

450 KM of Track



Overhead LED Screen



Interior Sliding Doors



Overhead Luggage Rack



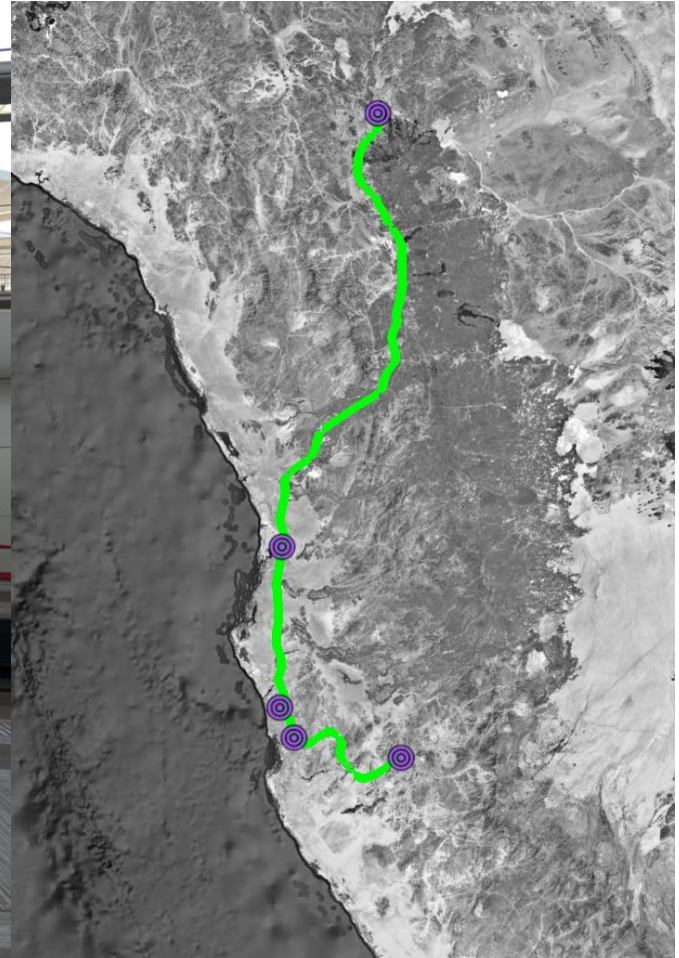
Train Wrapping

\*Quantities and locations subject to change without prior notice



# 9.1m Passengers Utilized HHR in 2024

Makkah | Jeddah - Al Sulaymaniyah | Jeddah - King Abdulaziz international Airport | King Abdullah Economic City | Madinah



# Dammam / Al-Khobar

Where Industry, Energy, and Vision Converge



# Greater Dammam | Upcoming Formats

Expected Installation: January 2026  
10x Unipoles  
30x Megacoms

10 Year **Exclusive** Contract

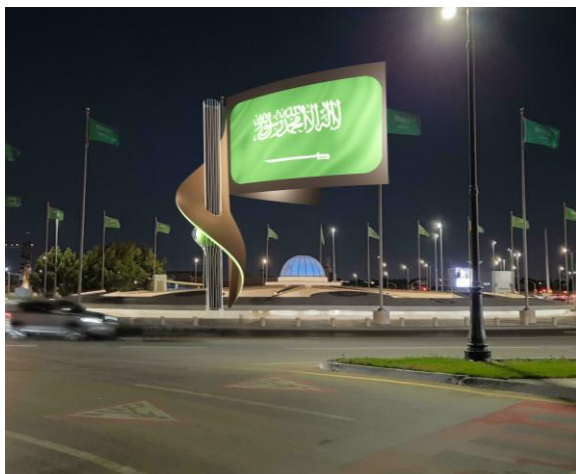
Dammam/Khobar/Dhahran Coverage

Digital Megacoms

Digital Unipoles

Super Megacoms

Digital Bridges



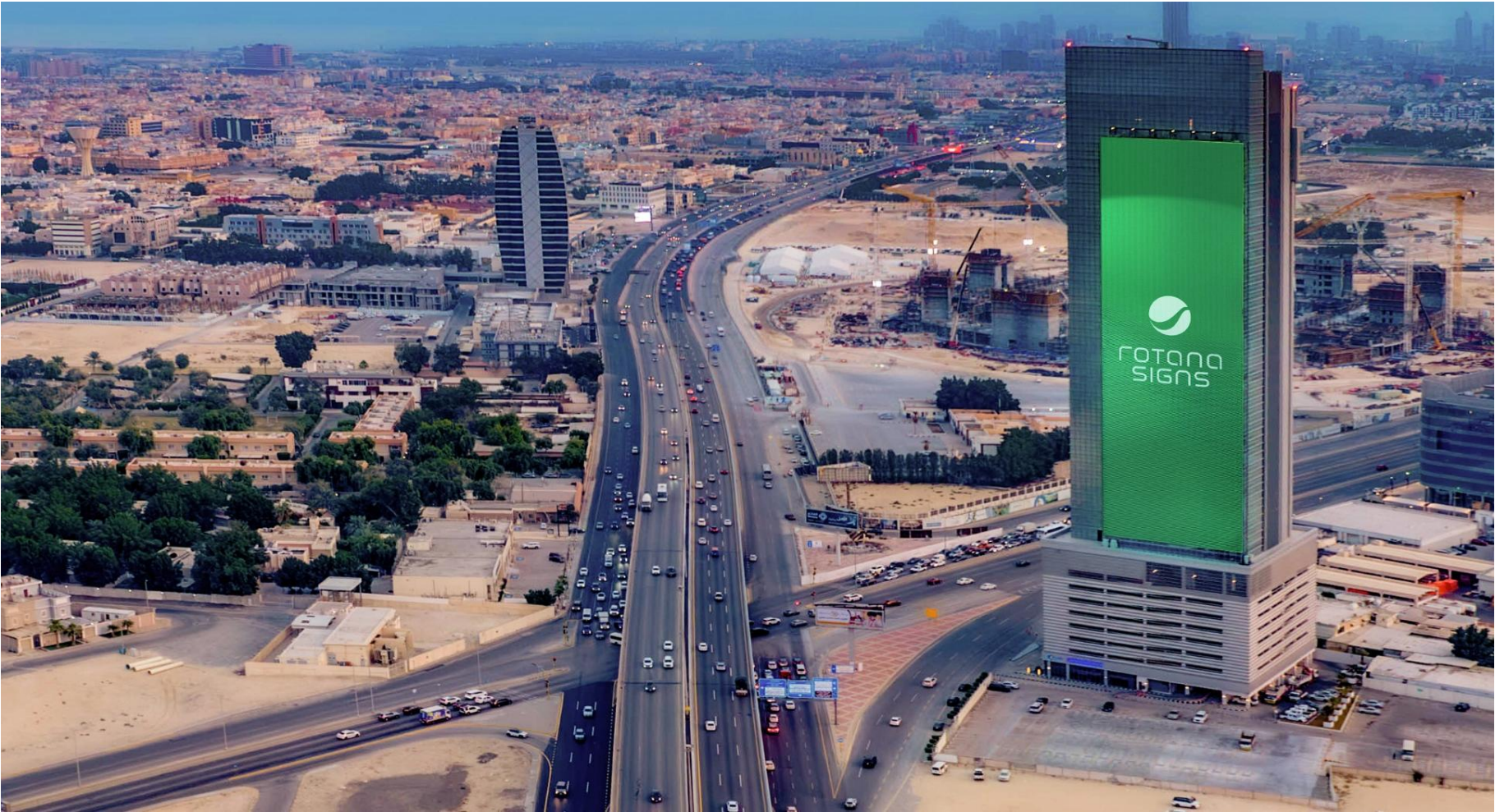


# Al Abdulkarim Tower

King Fahad Road, Al Qashlah, Dhahran

Series:	Legacy Series
Market:	Dhahran
Facades:	1
Installation:	North Façade

Orientation:	Portrait
Total Dimension:	30 meters x 90 meters
Total Façade Space:	2,700 m <sup>2</sup>
Location Map:	<a href="#">Click Here</a>



## Overview

Rising 150 meters with 41 floors, Al Abdulkarim Tower is the tallest commercial building in the Eastern Province, located at the King Fahad and King Saud Roads intersection in Dhahran.

Its northern façade hosts one of the province’s largest digital screens, offering strong visibility to motorists traveling between Dammam, Khobar, and Dhahran.









# Al Khaldi Tower

Custodian of The Two Holy Mosques Road, Aljamiah District, Dhahran

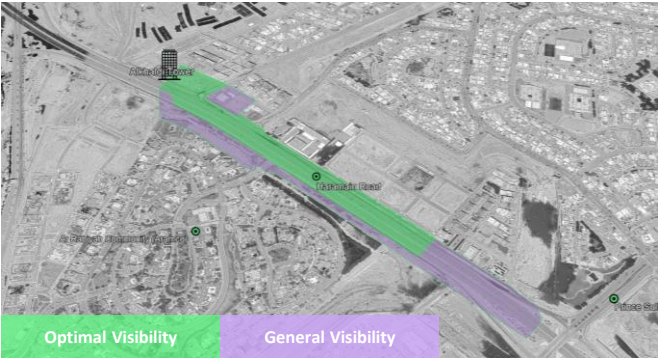
Series:	Legacy Series
Market:	Dhahran
Facades:	1
Installation:	South Facade

Orientation:	Portrait
Total Dimension:	20 meters x 25 meters
Total Façade Space:	500 m²
Location Map:	<a href="#">Click Here</a>

## Overview

Strategically located in Dhahran along the bustling Custodian of The Two Holy Mosques Road, AlKhalidi Tower stands opposite the iconic Ithra and near the Saudi Aramco vicinity.

Its state-of-the-art digital screen commands visibility along one of the Eastern Province’s key arteries, connecting Dhahran, Dammam, and Al Khobar, and engaging motorists traveling toward major destinations including Al Qatif, Al Jubail, and Bahrain.





# Gulf Center

Prince Turkey Street, Al Corniche, Al Khobar

Series:	Legacy Series
Market:	Al Khobar
Facades:	1   L-Shape
Installation:	North & West Façade

Orientation:	Landscape
Total Dimension:	95 meters x 9 meters
Total Façade Space:	855 m²
Location Map:	<a href="#">Click Here</a>

## Overview

Located on Al Khobar’s Corniche along Prince Turkey Street, the Gulf Center features an L-shaped digital façade with north and west exposure for maximum visibility.

Positioned at a key T-junction connecting Dammam, Dhahran, and Al Khobar, it offers unobstructed views and continuous exposure to high daily traffic to motorists entering and leaving the Al Khobar Corniche area.



# Mousa Tower

King Fahad Road, Al Khalidiyyah Al Janubiyah, Dammam

Series:	Legacy Series
Market:	Dammam
Facades:	1
Installation:	South Facade

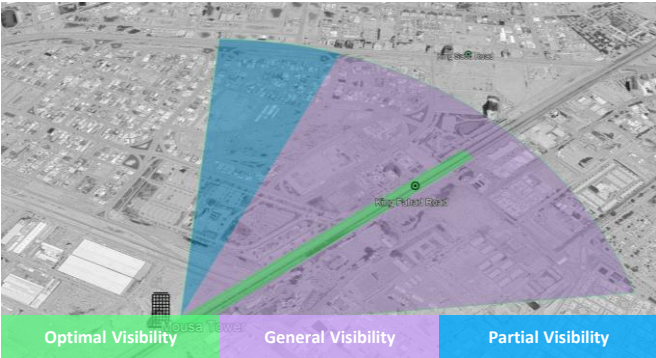
Orientation:	Portrait
Total Dimension:	40 meters x 60 meters
Total Façade Space:	2,400 m <sup>2</sup>
Location Map:	<a href="#">Click Here</a>



## Overview

Mousa Tower, located along King Fahad Road in East Dammam, features a prominent southern façade digital screen visible from over 1 km away.

It targets northbound traffic from Al Khobar and nearby areas, offering prime exposure to motorists heading toward Dammam’s key residential, commercial, and port districts.





# Street LED

City Wide Distribution, Dammam/Al-Khobar

Series:	Digital Series
Market:	Dammam/Al-Khobar
Location / Faces:	6 Locations / 6 Faces
Installation:	Traffic Intersections

Orientation:	Square
Av. Dimension:	8 meters x 8 meters
Av. Space:	64m² per façade
Location Map:	<a href="#">Click Here</a>

## Overview

Street LEDs have become a key feature of urban advertising, delivering dynamic, high-impact content at busy intersections.

These versatile 8m x 8m displays suit all campaign types and engage motorists during standstill traffic in community hotspots.



# Madinah & Makkah

Driving hospitality, infrastructure, and transformative urban growth



# \*Makkah | Upcoming Formats

Expected Installation: January 2026  
10x Unipoles  
30x Megacoms

10 Year Contract

600+ Points

City-Wide Coverage

Megacoms

Street Mupis

Street LEDs

Unipoles

Concrete Bridges

Bus Shelter Mupis

Landmark Formats

Pedestrian Bridges





# Digital Hoarding

Al Imam Al Muslim Road, Jable Jammah and Ghurabah, Madinah

Series:	Legacy Series
Market:	Madinah
Facades:	2
Installation:	East & West Façade

Orientation:	Landscape
Total Dimension:	40 meters x 8 meters
Total Façade Space:	320 m² per facade
Location Map:	<a href="#">Click Here</a>

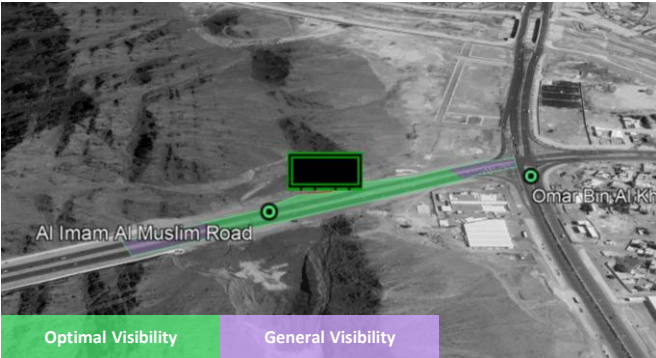


## Overview

As Saudi Arabia’s first Digital Hoarding installation, these two 40 x 8 meter structures mark a milestone in the Kingdom’s OOH evolution.

Positioned on Al Imam Al Muslim Road southwest of the Holy Mosque, they command heavy traffic flow connecting major city routes.

The project reflects Madinah’s urban growth and rising demand for dynamic advertising platforms.





# \*Digital Hoarding

King Abdallah Road (Second Ring Road) after Al-Faleh Sport Center, Madinah

Series:	Legacy Series
Market:	Madinah
Facades:	1
Installation:	East Façade

Orientation:	Landscape
Total Dimension:	50 meters x 8 meters
Total Façade Space:	400 m²
Location Map:	<a href="#">Click Here</a>

## Overview

As part of the continued development of Madinah’s out-of-home media landscape, a third premium Digital Hoarding has been strategically installed along King Abdullah Road (Second Ring Road), reinforcing the city’s high-impact advertising network.

Located just 1.1 km south of the King Abdulaziz x King Abdullah Junction, this prime digital site sits on the eastern stretch of the Second Ring Road a key artery connecting motorists to and from Prince Mohammad bin Abdulaziz International Airport and the Haramain High-Speed Railway Station.

The location delivers strong reach, consistent frequency, and impactful brand exposure across one of Madinah’s most vital transit corridor.



\*refers to upcoming media formats



# Jood Tower

King Abdallah Bin Abdulaziz Road (Second Ring Road), Al Aridh District, Madinah

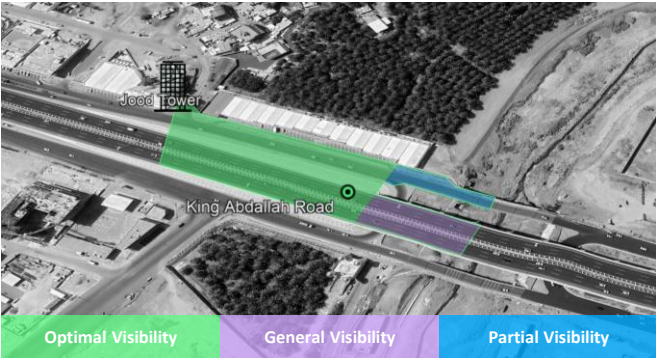
Series:	Legacy Series
Market:	Madinah
Facades:	1
Installation:	North Façade

Orientation:	Portrait
Total Dimension:	13 meters x 19 meters
Total Façade Space:	247 m²
Location Map:	<a href="#">Click Here</a>



## Overview

Installed on the northeast section of Madinah’s Second Ring Road (King Abdullah Road), this Digital Building Façade faces southbound traffic near Al Rashid Mall. Just 400 meters away, the site experiences heavy flow toward King Abdulaziz Junction and is surrounded by hotels and commercial venues serving both residents and visiting pilgrims.





# Digital Megacom

City Wide, Makkah

Series:	Digital Series
Market:	Makkah
Faces:	TBC
Installation:	Inner-City/Roadside

Orientation:	Square
Total Dimension:	4 meters x 3 meters
Total Façade Space:	12 m²
Location Map:	<a href="#">Click Here</a>

## Overview

This mid-sized tactical format within the city of Makkah is **being installed** and is a wonderful medium designed for broad reach, high frequency and a tool for immediate awareness.

With congested and smaller streets found in Makkah, the Digital Megacom’s result in clearer exposure from either side of the road.

Structurally attractive, the Digital Megacom is 4x3 in size and will be situated along:

- All major city roads
- Inner-city streets
- Traffic intersections
- Key residential and business vicinities



*\*Final Design of Digital Megacom to be confirmed / Currently being rolled out*

# Other Cities

Where Innovation Shapes Urban Identity



# Digital Bridge

City Wide Distribution, Buraydah, Al Qassim

Series:	Digital Series
Market:	Buraydah, Al Qassim
Location / Faces:	12 Locations / 24 Faces
Installation:	Tunnels & Overpass

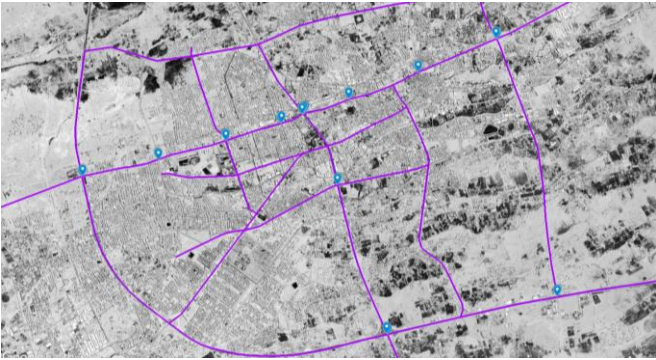
Orientation:	Landscape
Av. Dimension:	15.83 meters x 2.88 meters
Av. Space:	≈45.6m² per facade
Location Map:	<a href="#">Click Here</a>



## Overview

Buraydah, the capital of Al Qassim province and known as Saudi Arabia’s “food basket” for its rich agricultural output, is home to **24 Digital Bridges** across major roads and intersections.

Spanning entire lanes, these premium landscape-format screens offer unobstructed, long-distance visibility and direct line-of-sight exposure to all motorists, providing brands with exceptional reach throughout the city.





# Digital Bridge

City Centric Distribution, Arar

Series:	Digital Series
Market:	Arar
Location / Faces:	3 Locations / 6 Faces
Installation:	Tunnels & Overpass

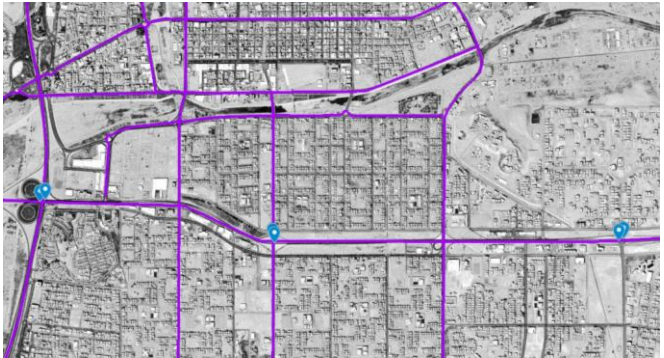
Orientation:	Landscape
Av. Dimension:	12.28 meters x 2.88 meters
Av. Space:	≈35.4m² per facade
Location Map:	<a href="#">Click Here</a>

## Overview

Located near the Iraqi border, Arar serves as the capital of the Northern Borders Province and plays a vital role as a growing trade and logistics hub.

Along its key city roads, Al Nabaq Road and Prince Abdulaziz Bin Musaed Road, 6 Digital Bridges offer powerful visibility in every direction of travel.

Each premium, landscape-oriented screen provides clear, unobstructed exposure and exceptional reach, allowing advertisers to deliver dynamic, time-specific messaging that connects with motorists across the city’s expanding network.





# Digital LED

City Central Distribution, Arar and Al Qurayyat

Series:	Digital Series
Market:	Arar & Al Qurayyat
Location / Faces:	1x Arar + 2x Al Qurayyat
Installation:	Traffic Intersections

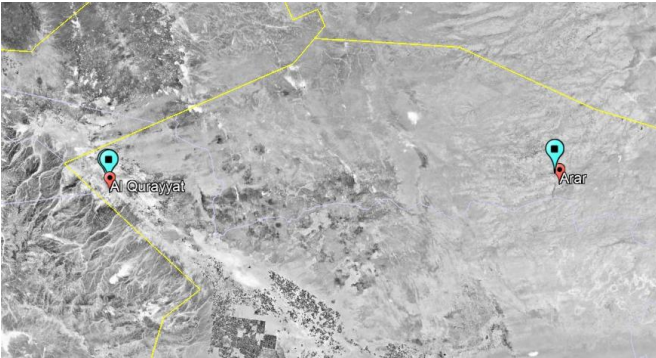
Orientation:	Square
Av. Dimension:	5/6 meters x 4 meters
Av. Space:	≈21m <sup>2</sup> per facade
Location Map:	<a href="#">Click Here</a>

## Overview

Out-of-home media in rural cities has long relied on static formats, but in Arar and Al Qurayyat, this has evolved with the introduction of Street LED.

Strategically positioned at the busiest intersections, these elevated displays offer dynamic visibility for motorists and pedestrians alike.

Installed at key traffic points, they maximize exposure, reinforce brand recall during prolonged waits, and support both static and animated campaigns for engaging storytelling.



# Aziz Building

Al Mutalla Street, Al Jabal District, Jazan

Series:	Legacy Series
Market:	Jazan
Facades:	1
Installation:	South Façade

Orientation:	Portrait
Total Dimension:	5 meters x 15 meters
Total Façade Space:	75 m²
Location Map:	<a href="#">Click Here</a>

## Overview

Located in central Jazan, the Aziz Building Screen stands along a major roadway surrounded by busy commercial and residential areas, including Al Jabal and Ar Rawdah districts.

Just south of Al Mutalla Street and near key city junctions, it offers strong visibility and continuous traffic exposure.





# Saraya Building

Prince Mohammad Bin Nasser Road, Ash Shati, Jazan

Series:	Legacy Series
Market:	Jazan
Facades:	1
Installation:	South Façade

Orientation:	Portrait
Total Dimension:	9 meters x 15 meters
Total Façade Space:	135 m²
Location Map:	<a href="#">Click Here</a>

## Overview

Located at a major crossroad in northern Jazan, this Digital Building Façade links central Jazan to Jazan University and nearby residential areas.

Along Prince Mohammad Bin Nasser Road, near AlSadfa Roundabout and Prince Metib Road, it offers strong visibility amid hotels, parks, and growing commercial zones.



# \*SNB Building

King Abdulaziz Road - 350m before King Faisal Road Roundabout, Jazan



Series:	Legacy Series
Market:	Jazan
Facades:	1
Installation:	West Façade

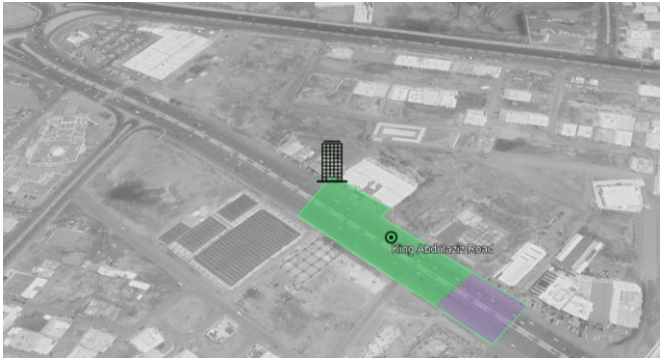
Orientation:	Portrait
Total Dimension:	9 meters x 17 meters
Total Façade Space:	153 m²
Location Map:	<a href="#">Click Here</a>

## Overview

Located along King Abdulaziz Road on the outer façade of the SNB Building in Al Safa District, this 9 x 17 meter digital portrait façade captures all eastbound traffic toward the King Faisal Junction, delivering strong, uninterrupted exposure.

Positioned on a key central corridor, just 200 meters before the Airport Road southern entrance and along the main route to Abu Areesh, the site benefits from consistent urban and intercity traffic.

Surrounded by local businesses, hotels, and serviced apartments, the location enjoys continuous activity, making it a powerful touchpoint for reaching high-frequency local audiences with impactful brand messaging.





# Static Maxi Billboard

Key Central Locations, Hail

Series:	Classical Series
Market:	Hail
Location / Faces:	3 Locations / 6 Faces
Installation:	Roadside

Orientation:	Landscape
Av. Dimension:	14.65 meters x 4.27 meters
Av. Space:	63m² per façade
Location Map:	<a href="#">Click Here</a>



## Overview

Located in northwestern Saudi Arabia, Hail City is a growing agricultural and commercial hub where Static Maxi Billboards offer brands powerful visibility across key roadways.

With a population of nearly 500,000, these elevated formats provide uninterrupted 24/7 exposure, ideal for bold messaging and long-term awareness campaigns.

Their commanding presence ensures lasting impact and consistent engagement with residents, commuters, and visitors.





# \*Maxi Billboard

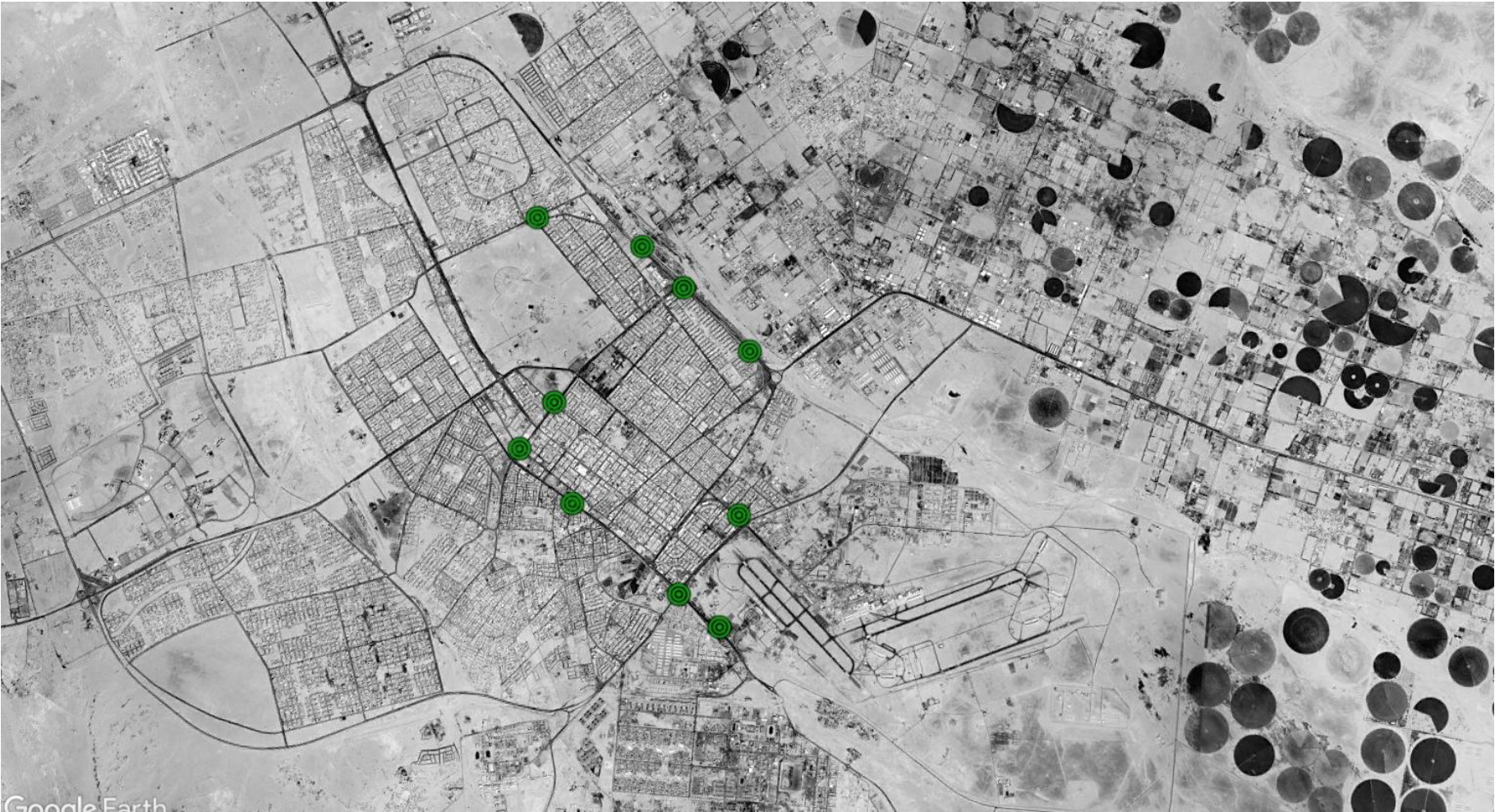
City Wide Distribution, Tabuk

Series:	Digital and Classic Series
Market:	Tabuk
Faces:	TBC
Installation:	Roadside

Orientation:	Landscape
Av. Dimension:	10m x 5m
Av. Space:	50 m²
Location Map:	<a href="#">Click Here</a>

Installation: Jan/Feb 2026

Maxi Billboards will soon also have presence across the city of Tabuk, helping elevate the OOH landscape in the northern gateway city.



\*refers to upcoming media formats / \*Quantities and locations subject to change without prior notice

\*final designs yet to be confirmed.



# Retail Series

Conversion-Driven Environment | Impulse Engagement

# Digital Gate

Major Supermarket Chains, Riyadh, Jeddah and Dammam/Khobar

Series:	Retail Series
Market:	Riyadh, Jeddah, Dam/Kho
Units:	41
Installation:	Supermarket Entrances

Chains:	2 Supermarket Chains
Orientation:	Arch
Dimension:	≈4.3 meters x 3.5 meters
Location Map:	<a href="#">Click Here</a>

## Overview

Digital Gates serve as powerful shopper engagement touchpoints, positioned at supermarket entrances to capture attention at the very start of the shopping journey.

As one of the Kingdom’s newest in-store digital formats, they deliver unmissable visibility in high-traffic retail spaces, ideal for promotions, seasonal campaigns, and brand awareness.

By engaging consumers at entry, Digital Gates strengthen recall and influence purchase decisions from the outset.



\*Quantities and locations subject to change without prior notice



<b>Series:</b>	<b>Retail Series</b>
<b>Market:</b>	Riyadh, Jeddah, Dam/Kho
<b>Faces:</b>	874
<b>Installation:</b>	Above Cashier Desk

**Chains:** 7 Supermarket Chains

**Orientation:** Portrait

**Dimension:** 90 cm x 160 cm

**Location Map:** [Click Here](#)

Hyper Digital Solutions (HDS) is a dynamic in-store advertising format that engages shoppers while browsing and at checkout.

Supporting both static and animated content, HDS reinforces impulse buying and promotions, ensuring brands reach consumers when they're most ready to act.



# Resources & References





# Artwork Specifications & Video Reference

Feel free to explore and reach out to our sales team for more information



## Artwork Specifications

Ensure your campaign makes the greatest impact!

Click on the below to download the Artwork Specification Document and prepare your visuals for optimal display across Rotana Signs' premium formats

Artwork Specifications



## Video References

Discover a selection of videos highlighting the power and impact of our formats.

Rotana Signs

- [Kingdom Tower](#)
- [Burj Rafal](#)
- [Al Abdulkarim Tower](#)
- [Riyadh Metro](#)
- [Stars Avenue & Tahlia Mall](#)
- [Haji Terminal](#)

Brands

- [Vision 2030](#)
- [Samsung S25](#)
- [Mobily](#)
- [Rotana Studios](#)
- [Al Majdiah](#)

Brands

- [Piaget](#)
- [SNB](#)
- [Alinma Bank](#)
- [National Housing Company](#)
- [Extra Electronics](#)
- [Faisal Al Dayel](#)
- [Nintendo](#)
- [Jetour](#)
- [Rua Al-Haram](#)
- [Riyadh Fashion Week](#)
- [VOX – Tron Movie](#)
- [BYD](#)

**Rotana Signs journey has only just commenced and on behalf of the entire team, we look forward to the promise of tomorrow alongside one another.**



# Thank you

